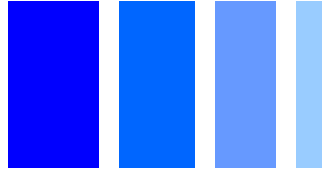


LF Receiver Antenna CAS11D23



Description

- LF receiver antenna for X/Y axis.
- Covered by over-molding.
- Low profile.
- L × W × H : 11.6 × 3.5 × 2.4 mm Max.
- RoHS compliance.

Environmental Data

- Operating temperature range: -40°C~+125°C
- Storage temperature range: -40°C~+125°C

Packaging

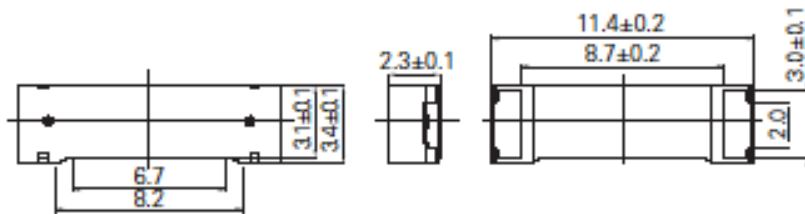
- Carrier tape and reel.
- 2,500pcs/ reel

Applications

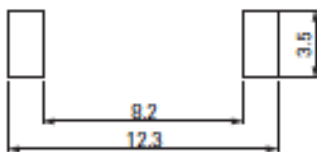
- PEPS, Smart key system.
- Security system
- TPMS



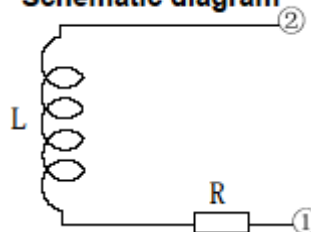
Dimension - [mm]



Suggest PCB layout - [mm]

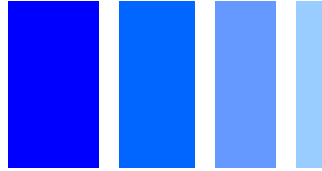


Schematic diagram



L: Ferrite core coil inductance.
R: Copper resistance.

LF Receiver Antenna CAS11D23



Electrical Characteristics

No.	Part No.	Stamp	Inductance(1-2)		Unloaded Q (Min.)	SRF Min. (kHz)	D.C.R Ref. (Ω)
			mH	Within			
01	CAS11D23-722	722	7.20	$\pm 3\%$	40	700	50
02	CAS11D23-472	472	4.70	$\pm 3\%$	40	1,000	32
03	CAS11D23-342	342	3.40	$\pm 3\%$	35	1,200	27
04	CAS11D23-232	232	2.36	$\pm 3\%$	40	1,500	16

* Measuring condition : L, Q at 125kHz, SER 1V